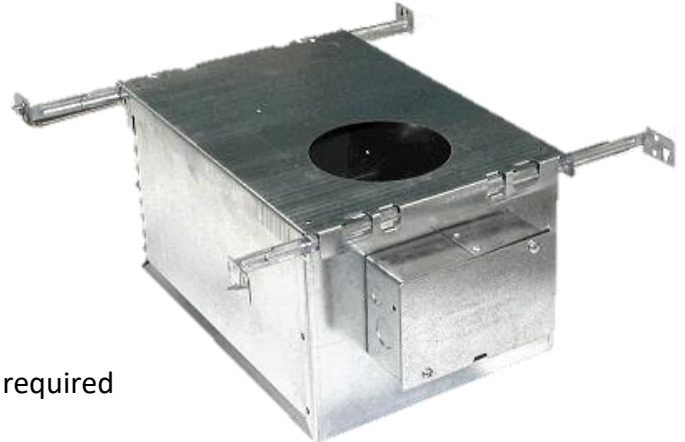


New Product Bulletin - Ultra Airtight Insulated Ceiling Boxes*

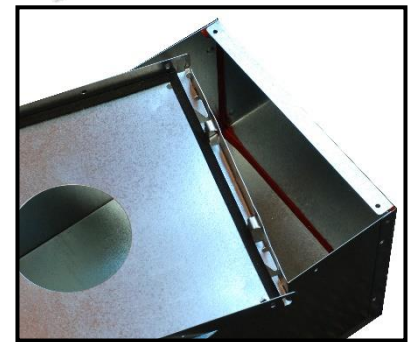
Tripar are pleased to offer our new line of ultra-airtight insulated ceiling (IC) boxes in a variety of sizes, *designed for an airflow rate not exceeding 2 CFM, but achieved 0.2CFM in October 2017 testing, meeting the most stringent regulations:

- Fully caulked corners with UL traceable caulking
- Gasketed mating plaster frame surfaces.
- Gasketed mating surfaces of integral junction box.
- Double ceiling box with 7/16" airspace.
- Galvanized steel construction.
- Holes or other features can be added to suit special requirements.
- Plaster frames available with any hole size or other required features.



Plaster frame sold separately for ease of electrical components assembly, as are interior & exterior junction box covers

Standard bar hangers (Tripar #1287) fit into integral bar slots of the plaster frames. For a Commercial bar hanger (Tripar #1487 L-Bar), these can be used with the addition of a butterfly bracket (Tripar #1254)



Intertek I.C.Box air leakage report October 2017:

<http://lighting.triparinc.com/wp-content/uploads/2017/10/Tripar-I.C.Box-Air-Leakage-Report.pdf>

BOX ITEM #	DESCRIPTION	BOX (Dims. in inches)			FITS W/ PLASTER FRAME SERIES
		LENGTH	WIDTH	HEIGHT	
1281-11AT	STANDARD	11-3/4	8-1/2	6-3/4	1286-XAT
1285-11AT	STANDARD-SHORT	11-3/4	8-1/2	4-3/4	1286-XAT
1284-11AT	LARGE-SHORT	14-7/8	12	6-3/4	1283-XAT & 1483-1-XAT
1282-11AT	LARGE-TALL	14-7/8	12	8-1/2	1283-XAT & 1483-1-XAT
1282-21AT	LARGE-EXTRA TALL	14-7/8	12	11-1/4	1283-XAT & 1483-1-XAT

ANCILLARY PARTS

ITEM #	DESCRIPTION
1242-31	INTERNAL JUNCTION BOX COVER (W/SPRING)
1242-30	EXTERNAL JUNCTION BOX COVER
1280	BAR HANGER BRACKET: 2 REQ'D (FOR 1283 SERIES PLASTER FRAMES ONLY)
1287	BAR HANGER, SET MALE & FEMALE, - 2 REQUIRED
TABLE ABOVE	PLASTER FRAME

