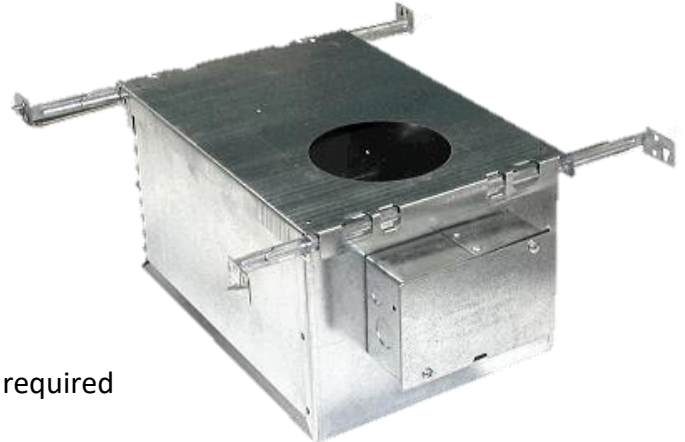


New Product Bulletin - Ultra Airtight Insulated Ceiling Boxes*

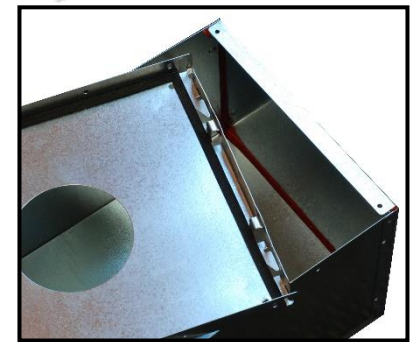
Tripair are pleased to offer our new line of ultra-airtight insulated ceiling (IC) boxes in a variety of sizes, *designed for an airflow rate not exceeding 2 CFM, but achieved 0.2CFM in October 2017 testing, meeting the most stringent regulations:

- Fully caulked corners with UL traceable caulking
- Gasketed mating plaster frame surfaces.
- Gasketed mating surfaces of integral junction box.
- Double ceiling box with 7/16" airspace.
- Galvanized steel construction.
- Holes or other features can be added to suit special requirements.
- Plaster frames available with any hole size or other required features.



Plaster frame sold separately for ease of electrical components assembly, as are interior & exterior junction box covers

Standard bar hangers (Tripar #1287) fit into integral bar slots of the plaster frames. For a Commercial bar hanger (Tripar #1487 L-Bar), these can be used with the addition of a butterfly bracket (Tripar #1254)



Intertek I.C.Box air leakage report October 2017:

<http://lighting.tripairinc.com/wp-content/uploads/2017/10/Tripair-I.C.Box-Air-Leakage-Report.pdf>

| BOX ITEM # | DESCRIPTION | BOX (Dims. in inches) | | | FITS W/ PLASTER FRAME SERIES |
|------------|-------------------|-----------------------|-------|--------|------------------------------|
| | | LENGTH | WIDTH | HEIGHT | |
| 1281-11AT | STANDARD | 11-3/4 | 8-1/2 | 6-3/4 | 1286-XAT |
| 1285-11AT | STANDARD-SHORT | 11-3/4 | 8-1/2 | 4-3/4 | 1286-XAT |
| 1284-11AT | LARGE-SHORT | 14-7/8 | 12 | 6-3/4 | 1283-XAT & 1483-1-XAT |
| 1284-12AT | LARGE-EXTRA SHORT | 14-7/8 | 12 | 5-1/8 | 1283-XAT & 1483-1-XAT |
| 1282-11AT | LARGE-TALL | 14-7/8 | 12 | 8-1/2 | 1283-XAT & 1483-1-XAT |
| 1282-21AT | LARGE-EXTRA TALL | 14-7/8 | 12 | 11-1/4 | 1283-XAT & 1483-1-XAT |

ANCILLARY PARTS

| ITEM # | DESCRIPTION |
|-------------|---|
| 1242-31 | INTERNAL JUNCTION BOX COVER (W/SPRING) |
| 1242-30 | EXTERNAL JUNCTION BOX COVER |
| 1280 | BAR HANGER BRACKET: 2 REQ'D (FOR 1283 SERIES PLASTER FRAMES ONLY) |
| 1287 | BAR HANGER, SET MALE & FEMALE, - 2 REQUIRED |
| TABLE ABOVE | PLASTER FRAME |

Downlight Line
Represented
in USA by:

